

WMD 1803



features:

- trouser flapping high SPL at very low frequencies
- wavefront refraction technology"
- lots of handles
- built-in wheels
- long throw/directional
- textured water resistant Noise Control Green coating



The WMD 1803 is a 1 x 18" extremely efficient long throw subwoofer, specifically designed for big indoor and outdoors venues. The 2.8m length of the horn gives it a huge amount of gain + beam and as there are no parallel sides within the box we have eliminated booming . Our WAVE FRONT REFRACTION" ensures punchy, pure sub clarity.

The WMD 1803 is designed to be used in pairs, as the boxes are not symmetrical on the inside. This means that a pair can be set up to be directional, or very directional. The more WMD 1803's you have, the more efficient each one becomes. They also can be used in conjunction with VSB 218 to achieve the full sub spectrum.

The WMD 1803 has a useable frequency range from 30Hz-125Hz. 1 x WMD 1803 will give you 107dB SPL @1w/1m. Maximum continuous SPL 137dB @1m.

applications:

- arenas
- festivals
- large night clubs
- band venues
- raves/dance

permanent installations in:

- large night clubs
- large band venues
- arenas
- auditoriums
- large places of worship

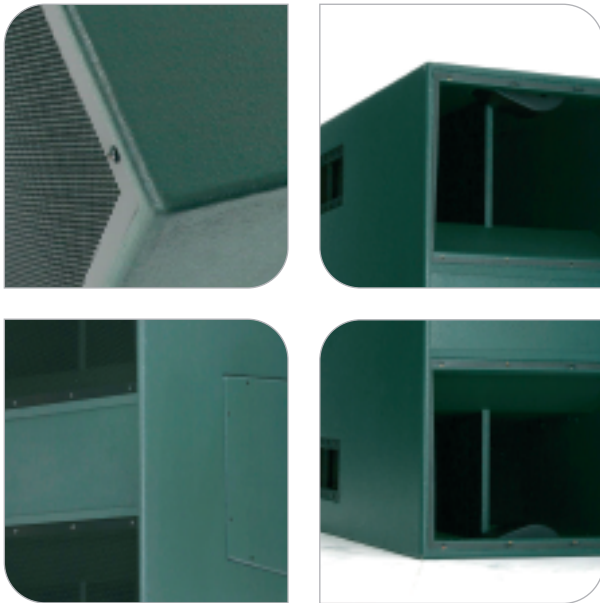


SPECIAL SERIES - WMD 1803

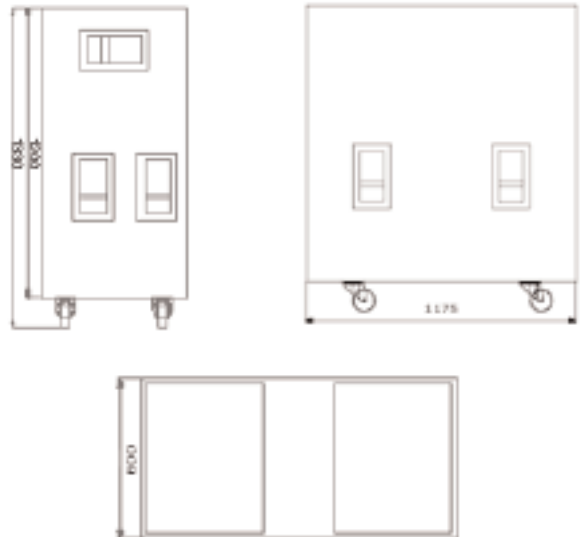


specifications

Type	Long throw subwoofer
Frequency response	25Hz-125Hz +-3dB
Driver	1 x 18" (457.2mm) 4" voice coil, dual suspension, vented gap
Power rating	625W AES 2500W peak
Recommended amplifier	1250W @8 ohms
Sensitivity	107dB @1w/1m
Nominal impedance	8 ohms
Maximum SPL	135dB @1m
Dispersion	30 x 20
Crossover points	30Hz and 80Hz
Connectors	2 x Neutrik NL4 Speakons
Dimensions	Height 600mm. width 1175mm, depth 1330mm
Construction	18mm birch ply finished in textured water resistant Noise Control Audio green with bespoke powder coated protective grill



overall dimensions



World HQ: Unit 3 Stephen House, 1(B) Darnley Road, London E9 6QH, UK
tel: +44 (0) 208 510 9010 fax: +44 (0) 208 533 1433 email: info@noisecontrolaudio.com